



OTHER SPACE SOLUTIONS FOR MILITARY AND AID ORGANISATIONS

ProContain supplies modular container systems for rapid, highly mobile use worldwide.

The extensive model range includes not only our adaptive protection system and independent energy components but also a wide selection of options that allow infrastructures to be created promptly in crisis areas:

- Team container
- Paramedic container
- Catering container
- Toilet/washroom container
- Customs units
- Janitor container/gate keeper
- Storage container
- Office container

TECHNICAL DETAILS? EXAMPLES OF FLOOR PLANS AND MODEL RANGE?

Would you like to find out more about the possibilities of the ProFlatPack system? Our experts can tell you about all the important details.

Have the strengths of the ProFlatPack system convinced you? We'd be happy to send you a non-binding offer.



ProContain GmbH
Business premises Coswig
Köhlerstraße 1–3
D-01640 Coswig bei Dresden
Phone +49 (3523) 818-88
Fax +49 (3523) 818-89

ProContain GmbH
Business premises Morsbach
Gewerbepark Stippe 1
D-51597 Morsbach
Phone +49 (2294) 9930-400
Fax +49 (2294) 9930-33400

info@procontain.com
www.procontain.com



Fotos stock.adobe.com, ©vectorfusionart, ©benjaminmole, ©astrosystem



MOBILE, SAFE AND SELF-SUFFICIENT

CONTAINER-BASED ACCOMMODATION

ProFlatPack

THE COLLAPSIBLE CONTAINER

Developed for temporary use in remote and inaccessible deployment areas and destinations, the ProFlatPack system is an easy-to-transport solution to all your accommodation problems.

ECONOMICAL AND SPACE-SAVING

Up to 8 ProFlatPacks can be transported per truck. The ISO dimensions also mean that they are easily carried by ship or plane.

EASY TO ASSEMBLE

The structure's screw system is designed for two-storey assembly and guarantees quick and easy installation.

MODULAR SYSTEM

If required, the system can be combined on site with adaptive protective equipment, a hybrid solar system and toilet/washroom facilities.

The advantage for you is that you can obtain all these options from one source: ProContain.

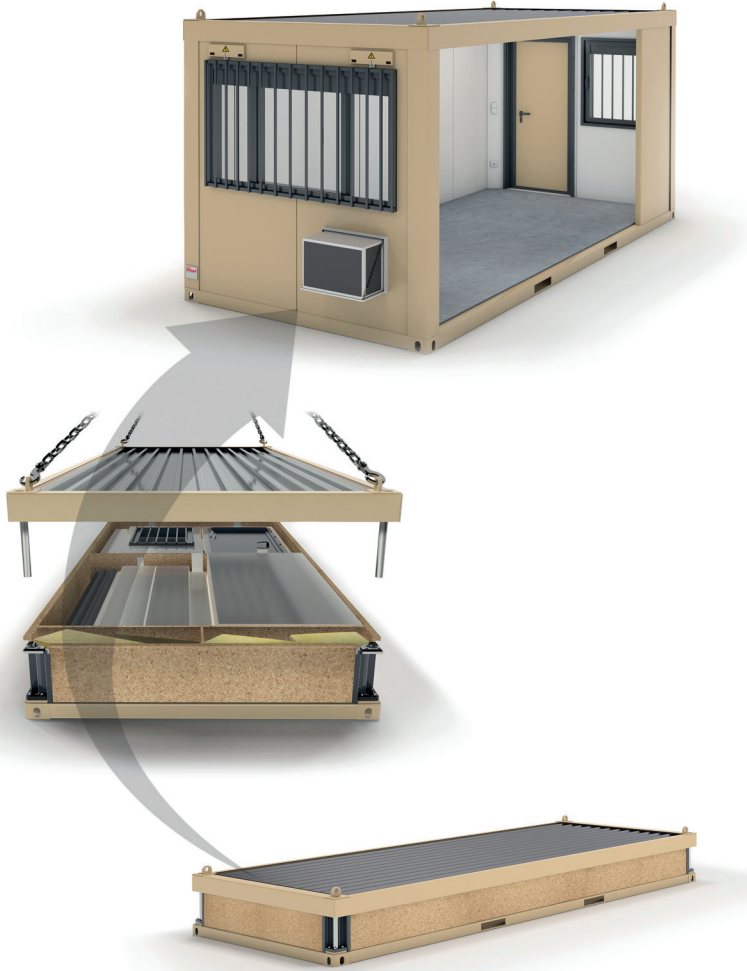
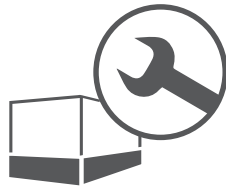
LOGISTICALLY INGENUOUS

Within just 9 days, a temporary container building can be constructed from 60 collapsible ProFlatpack units, and is fully functional and ready to use. Removal is also simple: The containers can be dismantled again in a few steps and then taken away.



DAY 1
Delivery and start of assembly

DAY 9
Completion and moving in



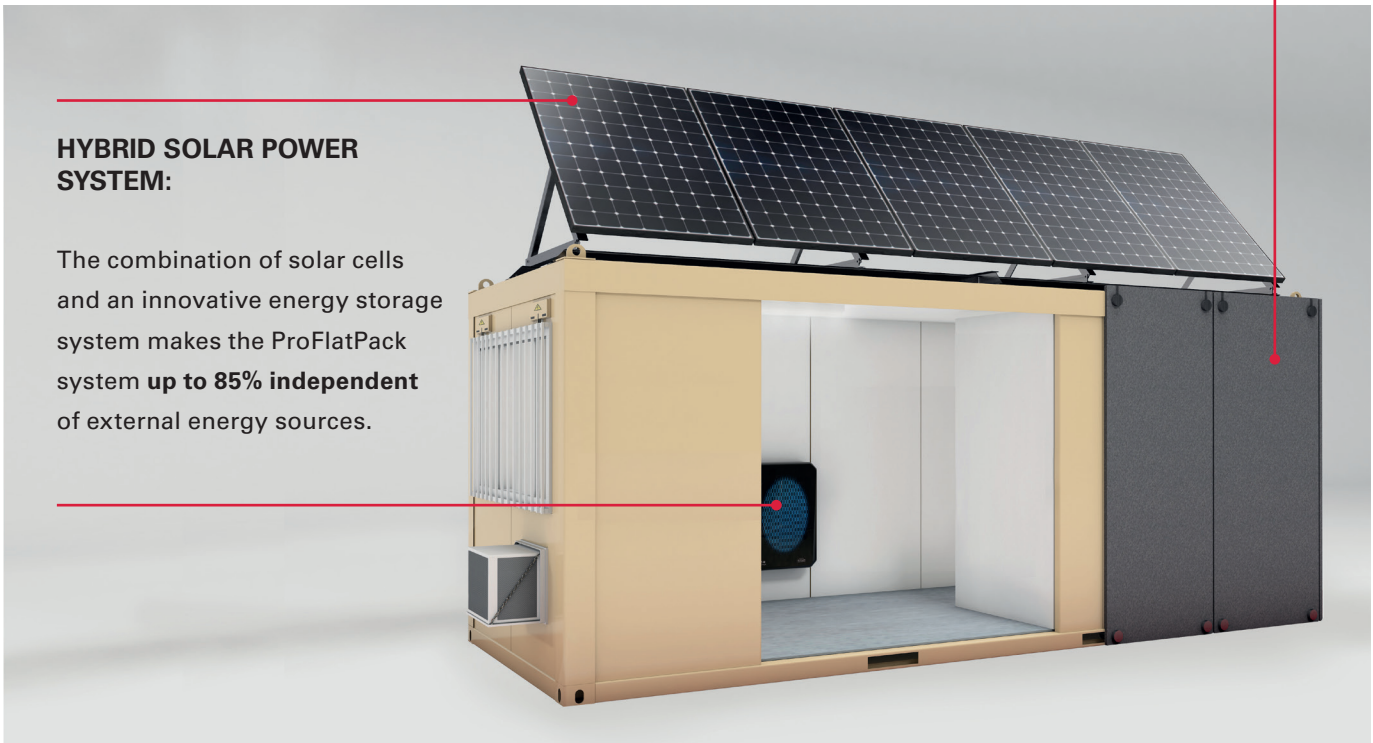
A SYSTEM FOR ANY APPLICATION

MODULAR EXTENSION OPTIONS

The ProFlatPack system can also be used for special deployments in the field of disaster response, at major events and for public safety applications.

ADAPTIVE PROTECTION:

Using an adaptive protection system, protection can be achieved up to level FB7. The advantage to you is that because of the modular design system, only the external surfaces of the building are protected. This cuts costs, makes transport easier and shortens assembly/dismantling times.



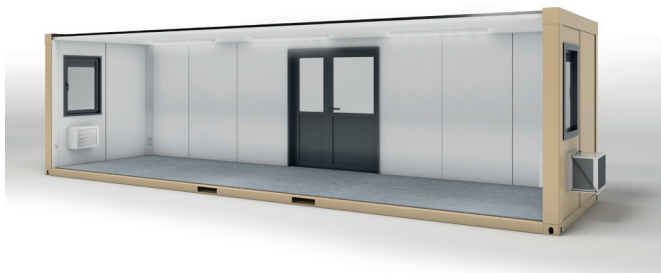
HYBRID SOLAR POWER SYSTEM:

The combination of solar cells and an innovative energy storage system makes the ProFlatPack system **up to 85% independent** of external energy sources.



FRESH WATER AND WASTE WATER TANK SYSTEMS:

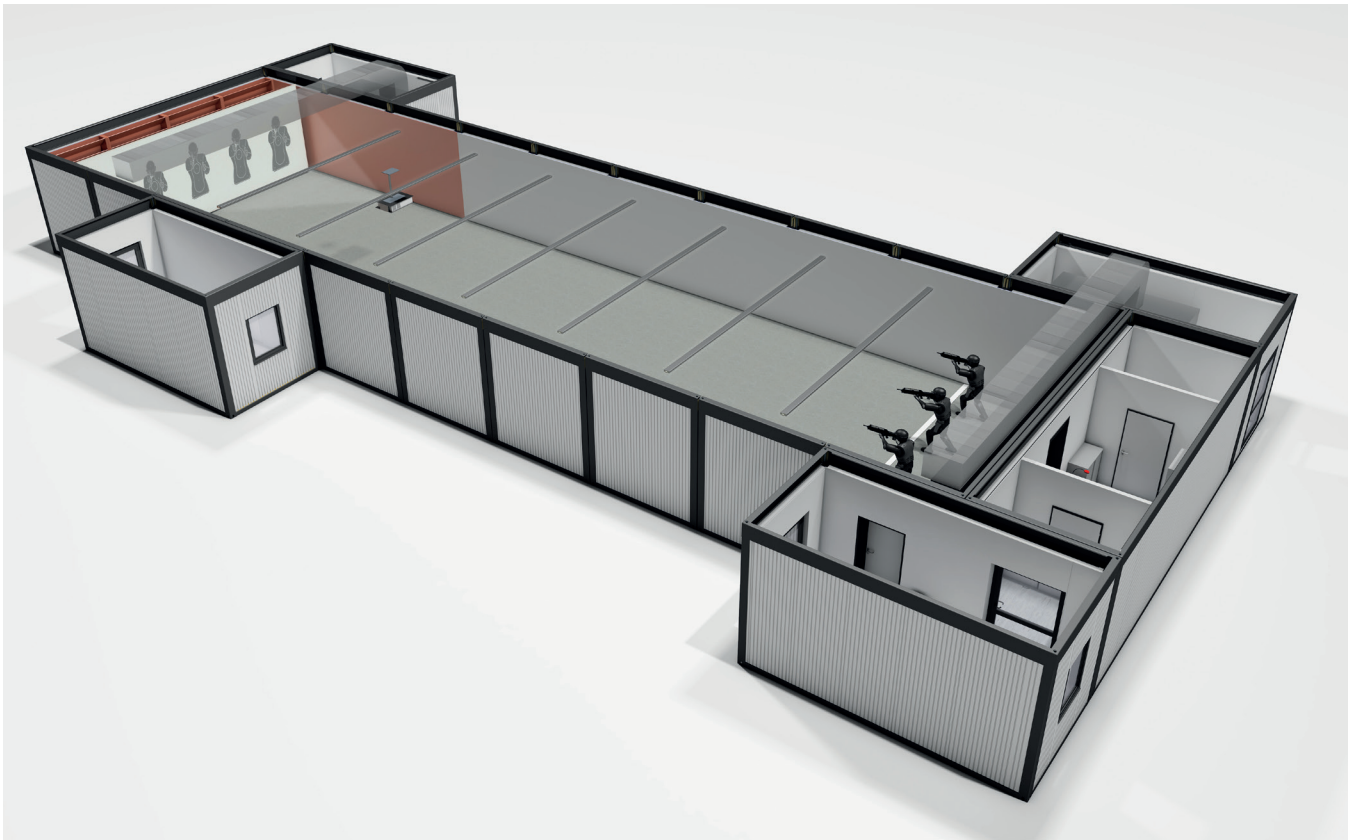
The available extensions with fresh water and waste water tanks plus the relevant stair and platform units allow the **systems to be used as independently as possible**.



XXL ProFlatPack:

You need more space?

We are the only manufacturer in the world also to offer our ProFlatPack system as a **30-foot module** (9.144m) in a self-supporting version. This enables you to create large spaces such as training, meeting and catering spaces in the area of use.



TRAINING FOR EMERGENCIES

MOBILE INDOOR SHOOTING RANGES

Developed for use by special military and police units, the mobile indoor shooting range can be assembled on site in a very short time and is soon up and running.

In collaboration with our partner specialising in the production of ballistics components, our range of services starts with the detailed process planning and the use of safety structures, which may also be bullet-proof, and continues through the final interior fitting work with the necessary bullet guards and bullet-proof windows and doors to handover of the keys.

